

## INSTALLATION CONSIDERATIONS:

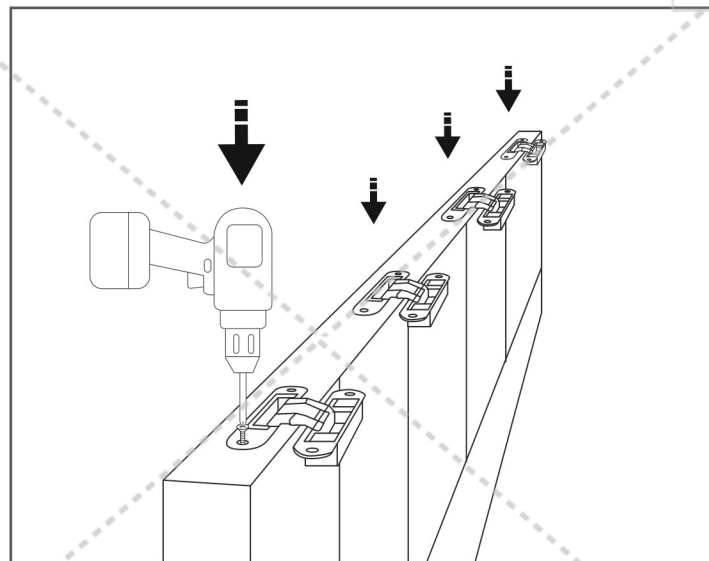
1. Measure size: before buying an interior door, carefully measure the size of the door to make sure that the door of the right size is selected.  
The height, width and thickness of the door frame need to be taken into account to ensure that the door is installed correctly and opens and closes smoothly.
2. Preparation tools: prepare the necessary tools, such as screwdriver, rubber hammer, level, etc., before installing the interior door.  
These tools will help you complete the installation process more easily.
3. Reading instructions: carefully read the installation instructions for interior door provided by the supplier.  
Follow the steps in the instructions to ensure that the installation is completed correctly and safely.
4. Check the status of the door: before starting the installation, check that the purchased interior door is in good condition.  
Ensure that there are no breakages, cracks or other quality problems.
5. Safety operation: please pay attention to your own safety during installation.  
Use appropriate tools and techniques to avoid accidental injuries and follow relevant safety guidelines and precautions.  
Fixed support: fix the support on the wall or door frame as needed so that the door is firmly in place.  
Ensure that the support is secure and properly secured.
6. Adjust the position of the door: adjust the position of the door to suit the direction in which you want to open and close the door, as needed.  
Make sure the door is aligned with the door frame and that there is enough space to open and close.
7. Regular maintenance: in order to keep the interior door in good condition, clean and lubricate the door tracks, hinges and locks regularly.  
This will help to prolong the service life of the indoor door and ensure its normal operation.

Please install the interior door in accordance with the above precautions, and always give priority to safety.  
If you have any questions about the installation process or need further assistance, please consult a professional or contact the supplier.

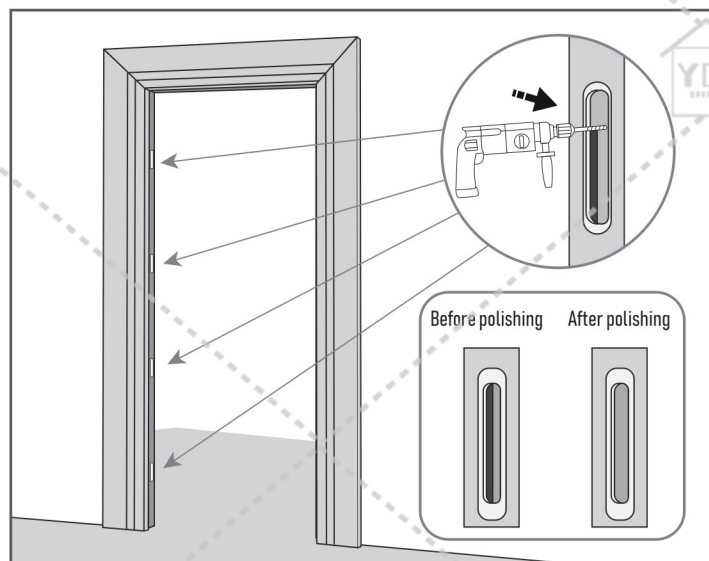
We wish you a safe and smooth completion of the installation of interior doors!

## Installation steps

- ⑪ Install the door hinge.



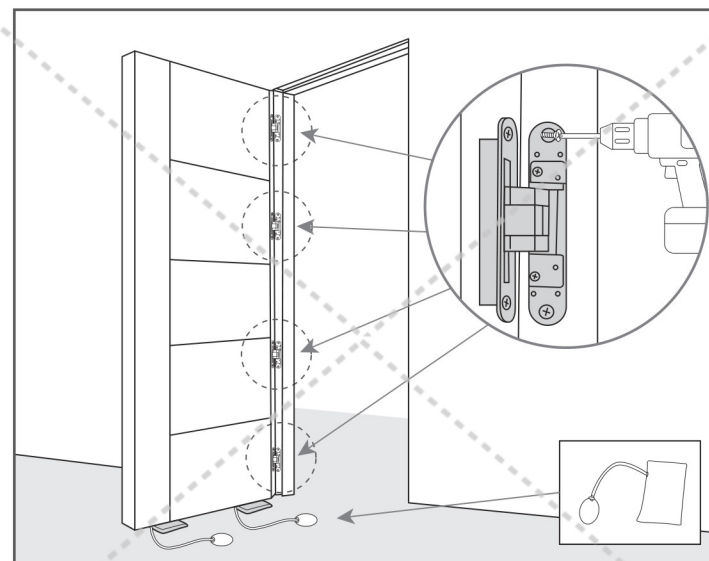
- ⑫ Polish the hinge position of the door cover.



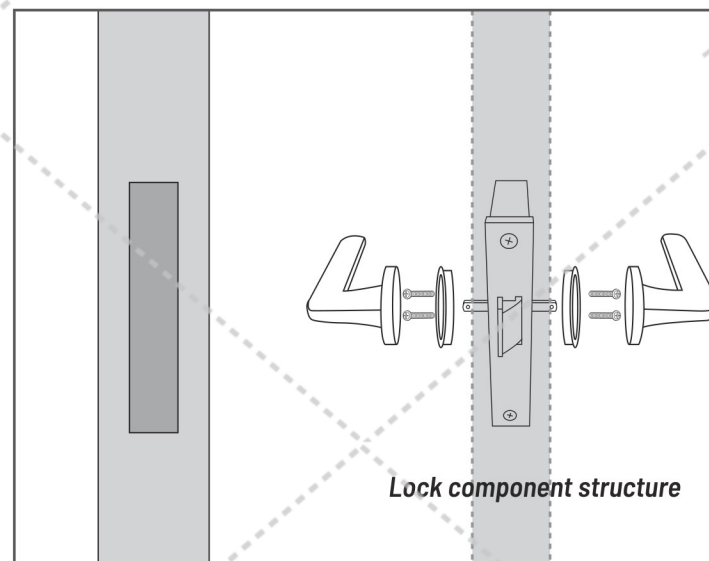
07

## Installation steps

- ⑬ Install the door leaf, cushion the door with air cushion, align the hinge of the door frame, and tighten the screws on the hinge.



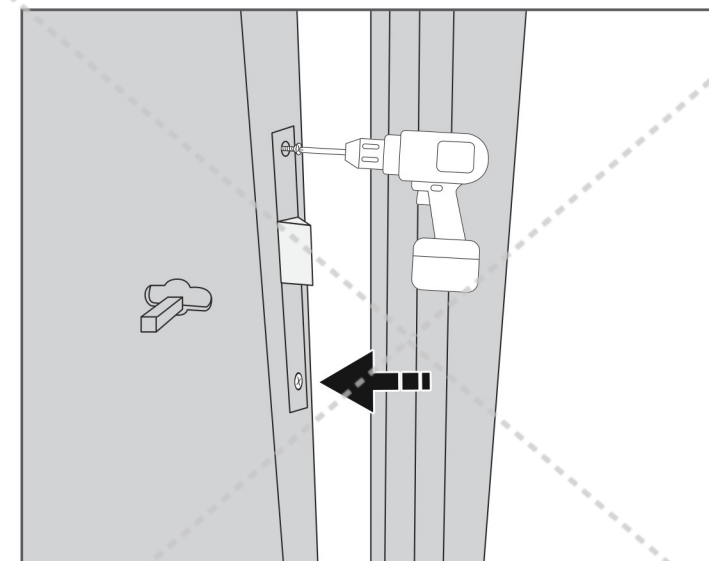
- ⑭ Prepare to install the lock, reference lock assembly structure.



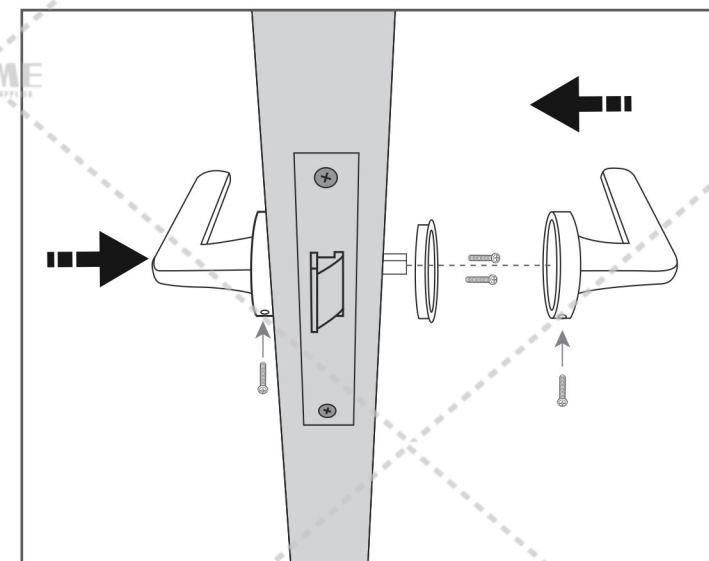
08

## Installation steps

- ⑮ Install the door lock and tighten the lock core component with screws.



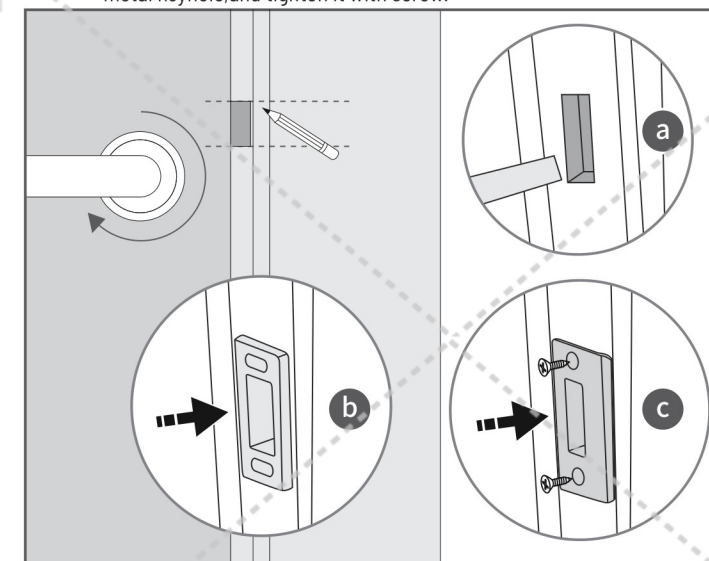
- ⑯ Install the handles on both sides of the lock and finally tighten the bottom with screws.



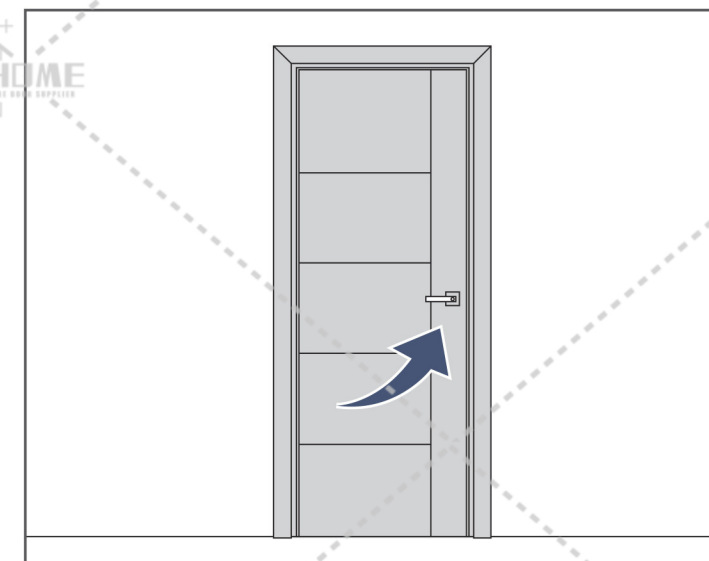
09

## Installation steps

- ⑰ Install the opening hole of the door, mark the position with a pencil, use the tool to open the hole, install the white keyhole first, then install the metal keyhole, and tighten it with screw.




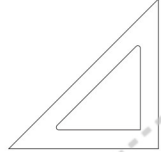
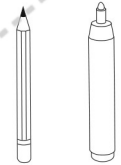
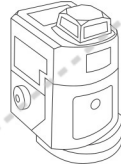
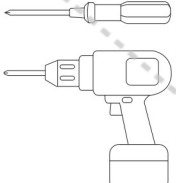
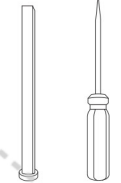
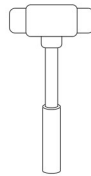

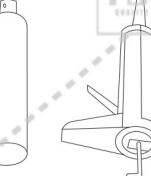


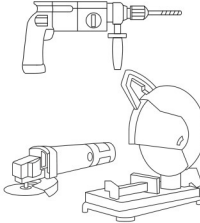
- ⑱ After installation, check the opening and closing of the door lock.



10

**INTERIOR DOOR**  
Installation Instruction

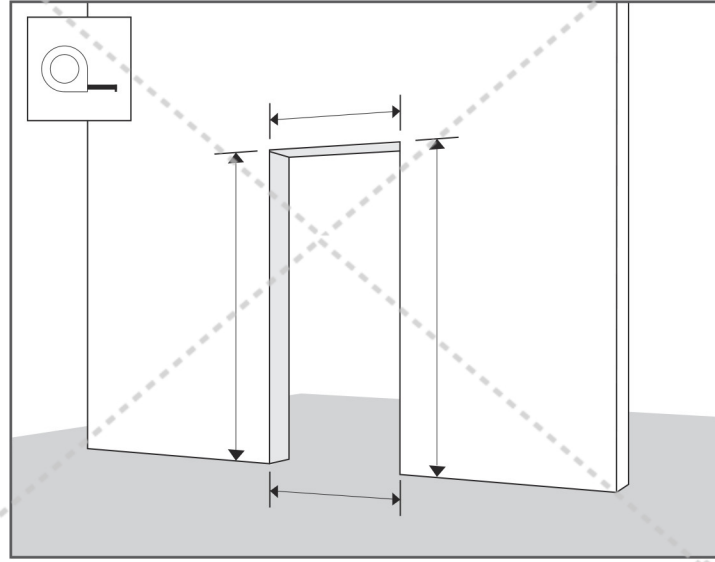
Installation Tool

 Tape Measure	 A right angle ruler	 Pencil & Colored pencils
 Level instrument	 Screwdriver & Electric Screw Driver	 Chisel & Awl
 Rubber Hammer	 Air Cushion	 Foam glue & Glass Glue
 Rubber Pad	 Utility Knife	 Electric drill & Cutting Machine

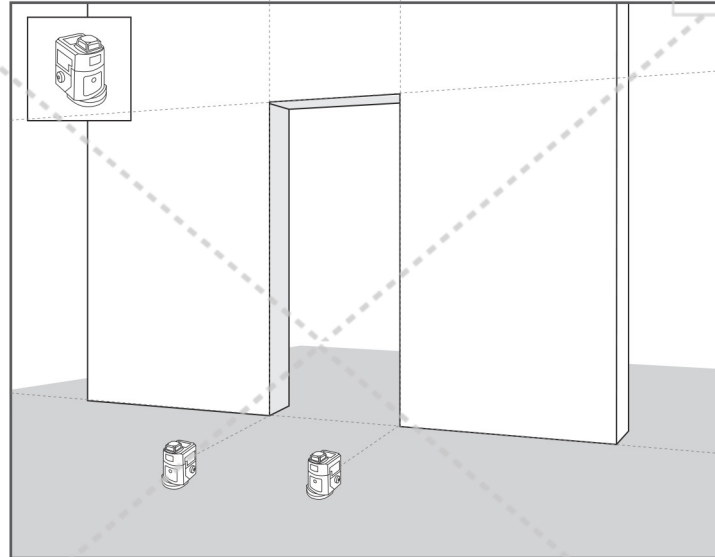
01

Installation steps

- ① Before installation, use a tape measure to measure the length (height) / width / thickness of the doorway.



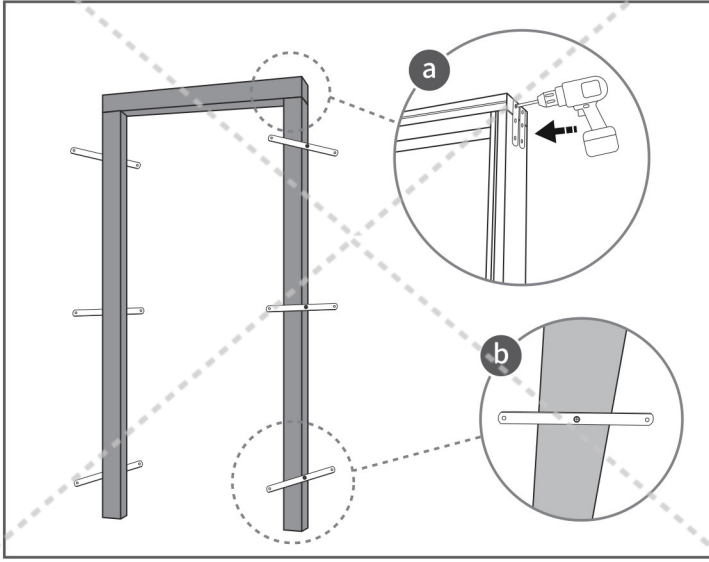
- ② Use a level to measure the flatness of the doorway.



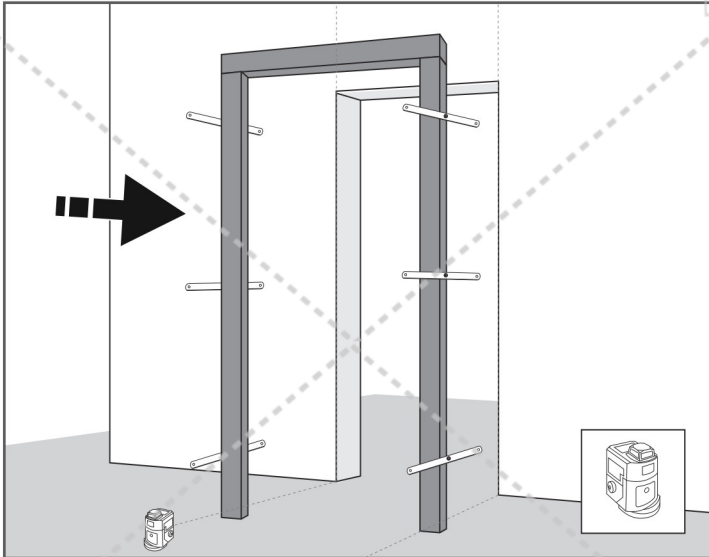
02

Installation steps

- ③ Assemble door frame and install pull tabs.



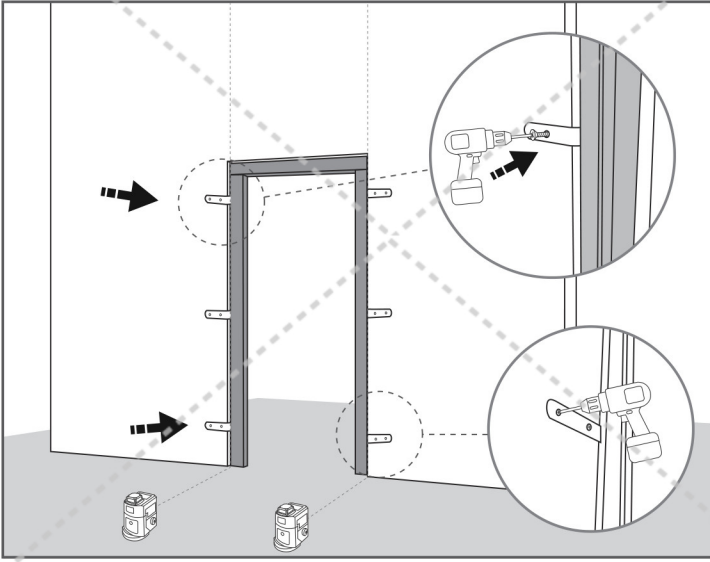
- ④ Install the door frame and use the level to check whether both sides are vertical.



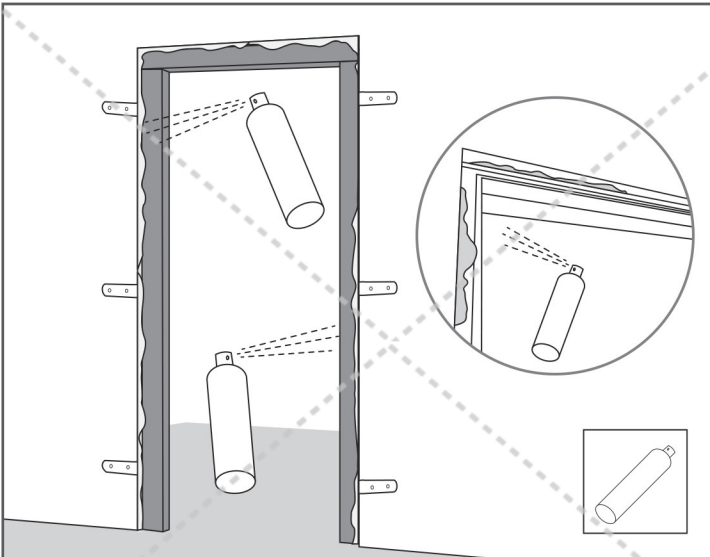
03

Installation steps

- ⑤ Use level to measure whether the door frame is vertical, then install pull piece screws, fix the door frame.



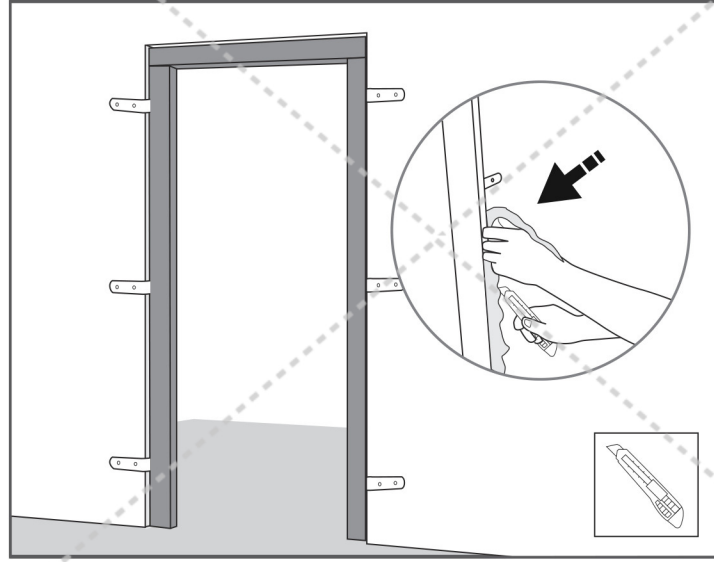
- ⑥ Spray foam, the gap around the inside and outside need to spray foam.



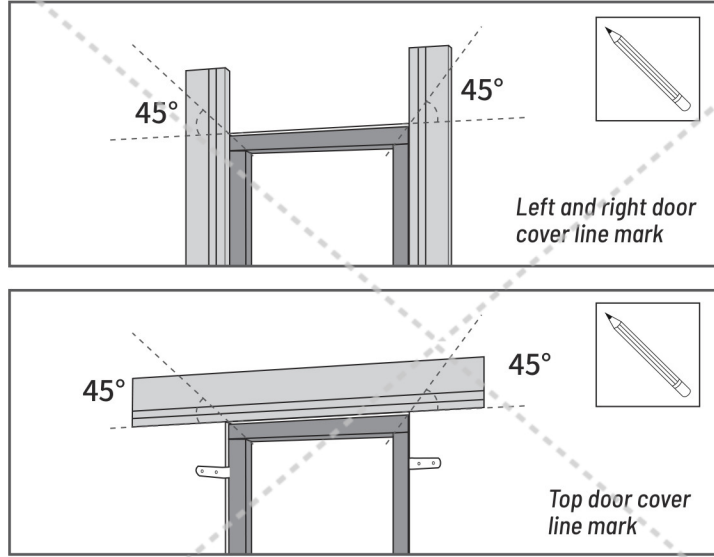
04

Installation steps

- ⑦ After the foam glue dries, clean up the excess.



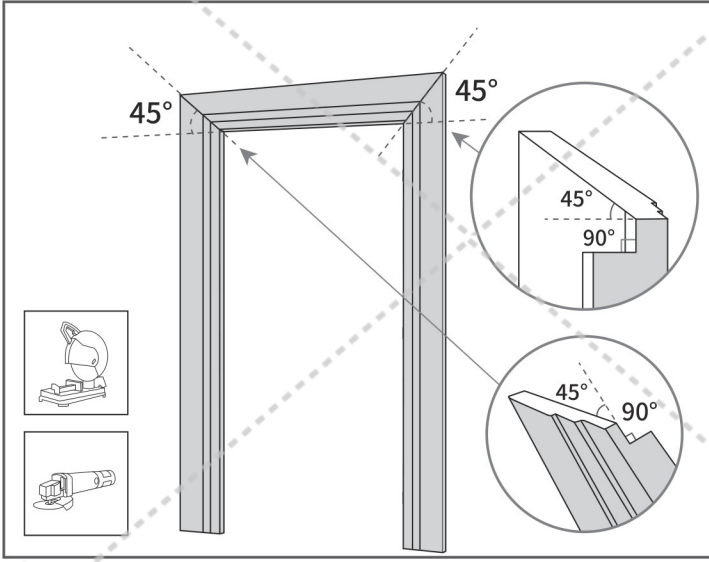
- ⑧ Record length and mark, cut to suitable length.



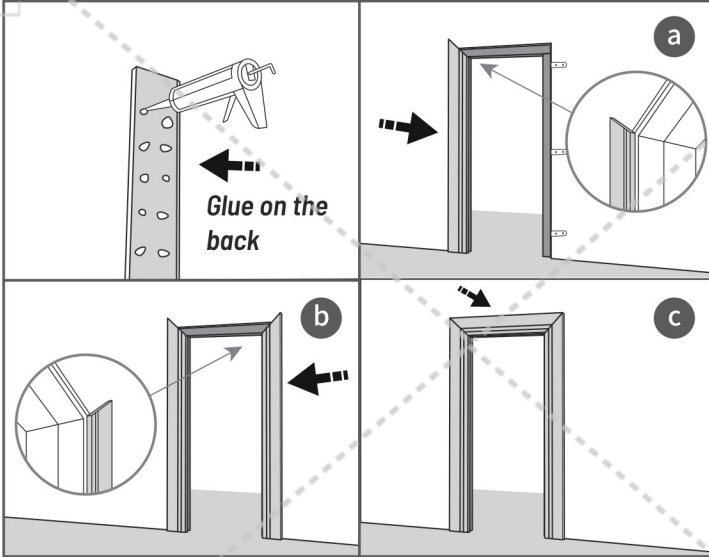
05

Installation steps

- ⑨ Cut the door cover line, the door cover line opening to fit the gap of the door frame.



- ⑩ Install the door cover line, spray glass glue at the seams, install both sides of the door cover line first, and then install the top door cover line.



06